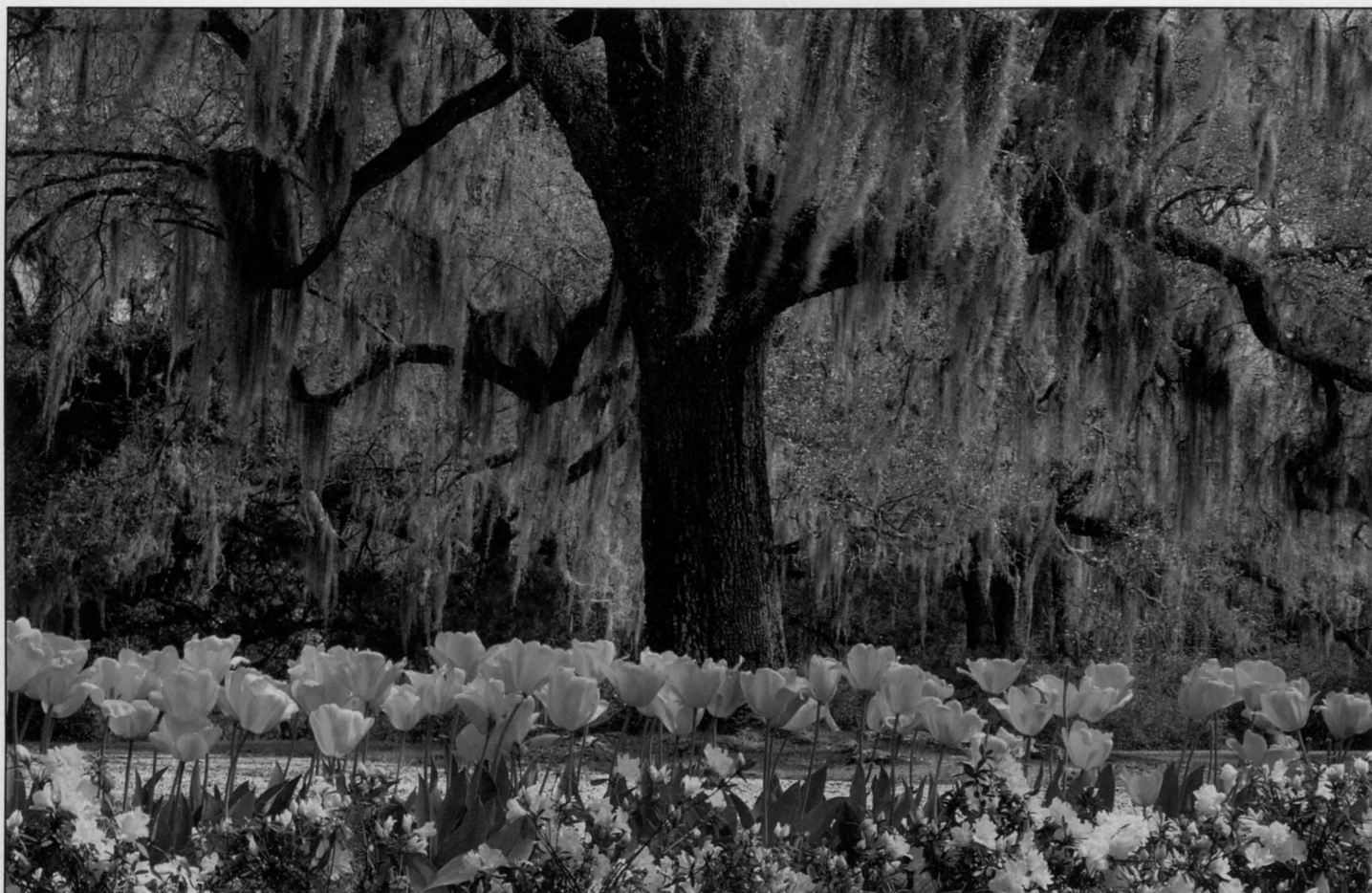


# LANDSCAPE ARCHITECTURE



38

## COVER STORY

Conservation and preservation

**38 Garden within Charred Walls**  
*by William Lake Douglas*

Restored landscape makes a personal statement

**42 Frontier Finesse**  
*by Deborah Papier*

Interpreting the clues to an early formal garden

**43 The Last of the Great Expos**  
*by David Dillon*

Pragmatism yields streamlined Dallas park revival

**46 From Olmsted to Infiniti**  
*by Jane Holtz Kay*

Landscape architects are called to join the environmental war

**50 A Ribbon of Green**  
*by Michael Dolan*

Bike path sets conservation scheme in motion

**54 LA Forum**

Can we save *everything* in the landscape?

112

**Prospect***by Alan Stovall*

Thoughts on developing a vision and planning slowly enough

**DESIGN**

Play spaces

68

**In Search of a Place to Play***by Sally Woodbridge*

Landscape architects make room for play in inner-city districts

**DEPARTMENTS**

8 Letters

108 Classifieds

18 News

89 Buyer's Guide

**ON THE COVER:** Afton Villa, in the Feliciana region of Louisiana, has undergone a decade-long garden renewal. Photo by Hickey-Robertson.

Landscape Architecture (ISSN 0023-8031) is published monthly by the American Society of Landscape Architects, copyright 1990. Second-class postage paid at Washington, DC, and additional mailing offices. SUBSCRIPTIONS: U.S.: \$38/year, \$60/2 years. Canada and foreign surface mail: \$65/year, \$120/2 years. Airmail: \$117/year, \$230/2 years. Students: \$28/year. Single copies \$6. Send U.S. funds to Landscape Architecture, 4401 Connecticut Ave., NW, 5th Floor, Washington, DC 20008-2302. Telephone (202) 686-2752. ASLA members: Please direct inquiries to Membership Dept., 4401 Connecticut Ave., NW, 5th Floor, Washington, DC 20008-2302.

**POSTMASTER:** Send address changes to *Landscape Architecture*, 4401 Connecticut Ave., NW, 5th Floor, Washington, DC 20008-2302.